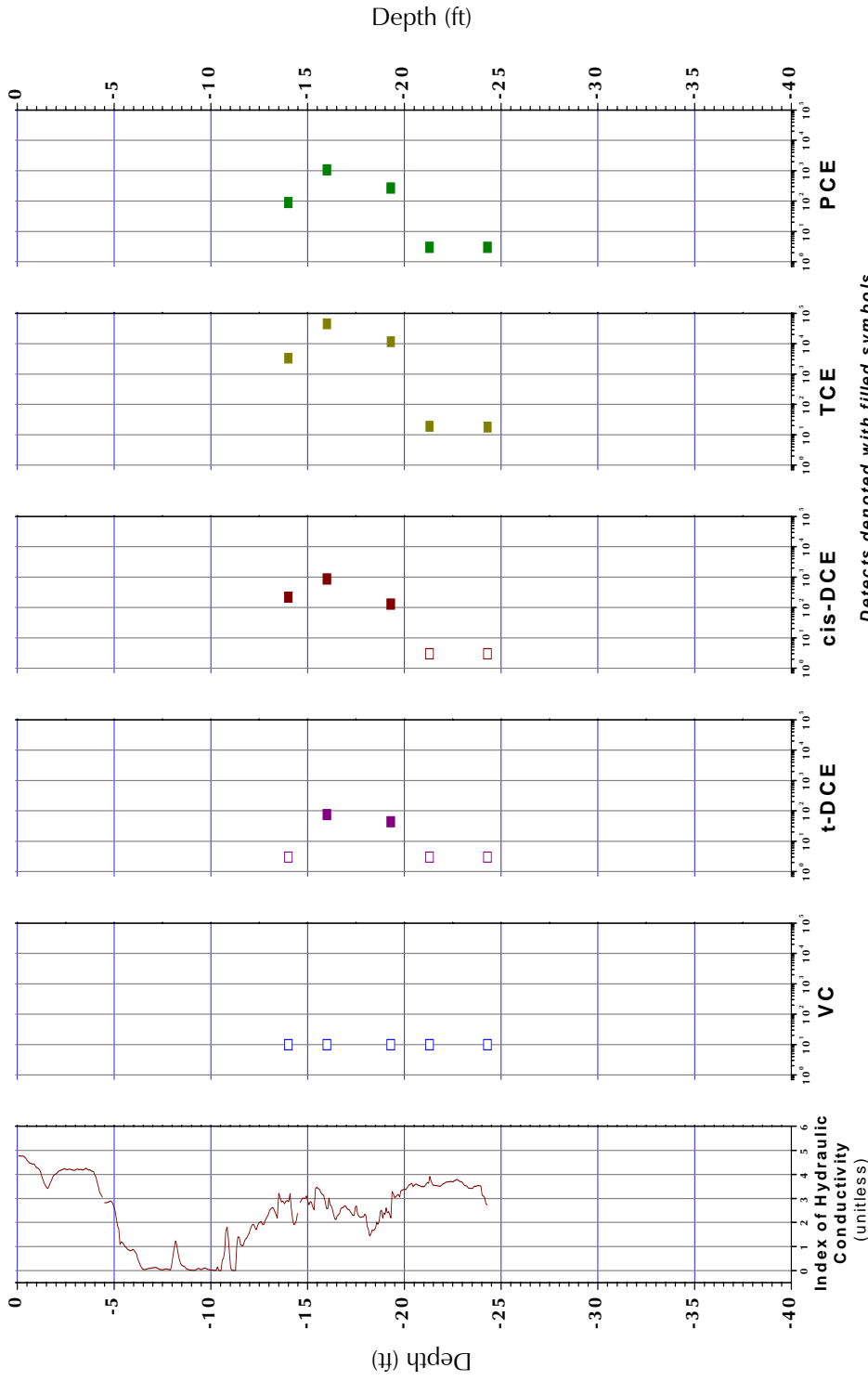


B-515



Detects denoted with filled symbols
 Non-Detects denoted with empty symbols at detection limit

Profile B-515, I_k RECORD AND SELECTED VOC ANALYTICAL RESULTS

Dates Sampled: 5/12/2005-5/13/2005

ERM, Wayland, Massachusetts

Source: groundwater quality profiling and mobile laboratory data

Path: 0:\proj03\1473-R Wayland\Spring2005\Data\VOC_Chem_B515.opj

Date: 05-17-05 amm



STONE ENVIRONMENTAL INC